



ANGLE HEAD

MST corporation

ANGLE HEAD **HALF**

**NEW
CONCEPT**

➔ P.2

Optimal design for drilling and tapping.

Add one more axis at
a minimum cost.



ANGLE HEAD STANDARD type

➔ P.9



SUPER RIGID MODEL
Ideal for end-mill application.

Custom-made products

➔ P.14

Extensive
manufacturing
experience.

Production
starting from
just 1 unit.



MST corporation


1711

ANGLE HEAD HALF

PAT.

- Affordable 2,300USD~
- Speedy Shorter delivery
- Light-weight 1.8 kg~
- Compact $\phi 36$ ~
- Repair it yourself

Drilling and tapping account for 80% of angle head operation.

The Angle Head HALF was redesigned to achieve the necessary rigidity and accuracy, it allows;

- AFFORDABLE (Price : 1/2)
- QUICK DELIVERY (Lead Time : 1/2)
- LIGHTWEIGHT (Weight : 1/2)



90° type

HFD/HFA
 $\phi 1 \sim 20\text{mm}$

HFT
M2~16

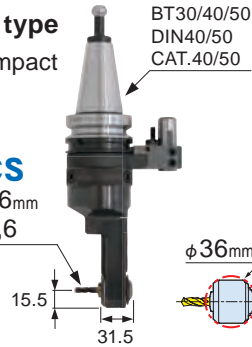


BT30/40/50
HSK-A63
DIN40/50
CAT.40/50

mini type

Extra-compact head

HFCS
 $\phi 3, 4, 6\text{mm}$
M4, 5, 6



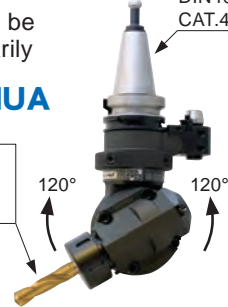
BT30/40/50
DIN40/50
CAT.40/50

UNIVERSAL type

Angle can be set arbitrarily

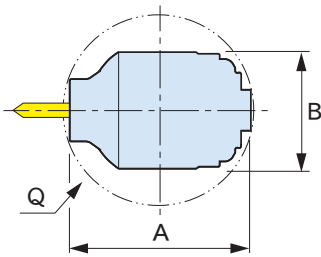
HUD/HUA
 $\phi 1 \sim 20\text{mm}$

HUT
M2~12



BT30/40/50
DIN40/50
CAT.40/50

Compact design



Type	CODE	Q	A	B
90° type	HFD 7	72	68	38
	HFD12	98	93	58
	HFT 4	75	73	38
	HFT 6	97	92	58
	HFA10	90	87	38
	HFA20	119	111	64
	HFT12	97	96	64
		116	115	
mini type	HFCS6	36	31.5	31

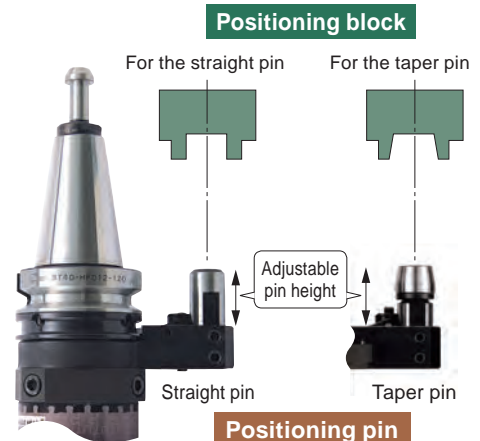
Auto Tool Changer (A.T.C) is available on BT30 machine.



BT30
1.8kg

Easy installation

The positioning pin allows an in-use positioning block to be used is now a standard feature. Can be used with a variety of machining centers.



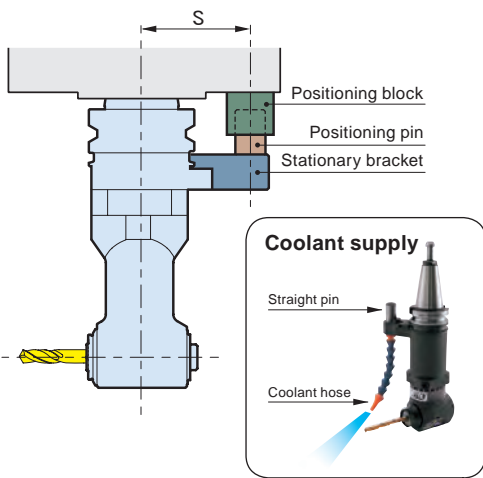
Easy disassembly and assembly

- The number of parts (22 pcs.) is half that of conventional angle heads.
- No need for fine matching and adjustment.
- Makes use of commercial items such as bearings. Affordable and readily available.
- An informative video and an instruction manual for disassembly and reassembly are provided.



Running cost is reduced by 90% as a result of reduced repair costs and machine down time.

Positioning block and positioning pin



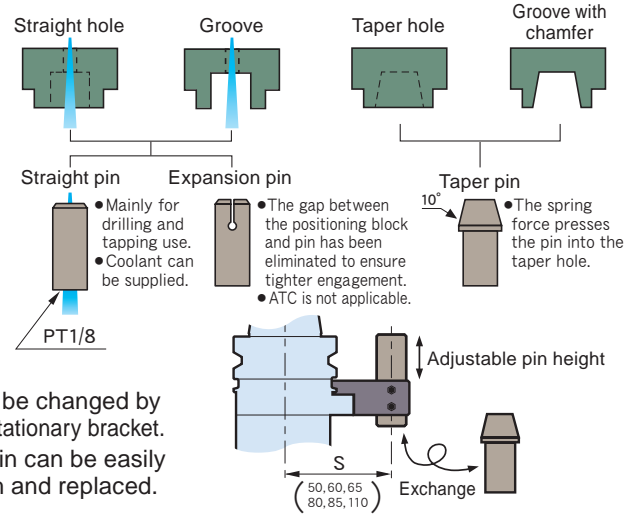
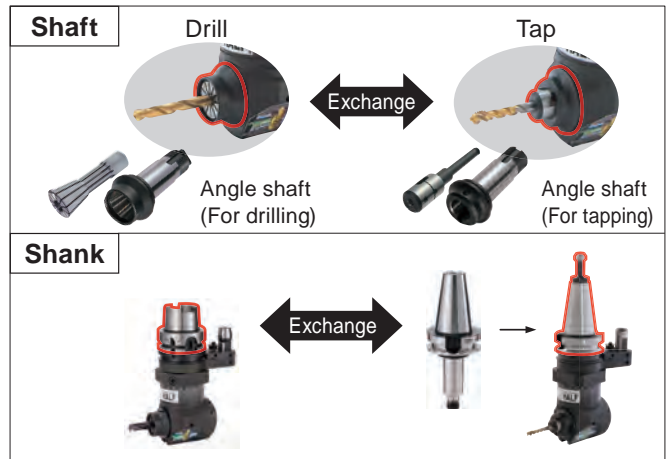
Positioning block

Positioning pin

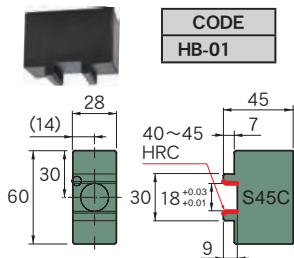
Stationary bracket

- S dimension can be changed by reassembling the stationary bracket.
- The positioning pin can be easily adjusted in length and replaced.

Easy to reassemble



Semi-finished positioning block



- Note**
- Please confirm with the machine tool manufacturer about the dimensions of the positioning block.
 - We have a semi-finished positioning block with a taper hole available. →P.14

Positioning block for machines

•FANUC

ROBODRILL
α-DIA series

CODE
ABF005



•MAZAK

SUPER VELOCITY CENTER
2000L/120-II 2000L/200-II



- Available from Yamazaki Mazak Corp.

•BROTHER

SPEEDIO
Tapping center



CODE	NOTE
ABF213	S300X1/S500X1/S700X1
ABF259	S1000X1
ABF176	TC-S2, S2A*, S2B, S2C, S2D, R2B*

■Caution

- TC-S2A* (Tapping center), the user needs to confirm whether the positioning block can be mounted on the machine (spindle surface) or not.
- TC-R2B* (Tapping center) machining area is limited to some extent due to interference between the positioning block and the internal part cover of the machine. For more information, please contact us.

■A product code example when ordering the Angle Head HALF.

- FANUC BT30-HFD7-122-S65
- BROTHER BT30-HFD7L-120-S50C

Kit Package

- Learning Kit to understand gear and bearing mechanism.
- There are only 22 parts and anyone can assemble them in about 10 min.
- Spare/consumable parts and assembly tools are included.



Contents of kit	CODE	
	BT40-HFD12-LK	BT50-HFD12-LK
Complete unit	BT40-HFD12-180-S65 (1 pc.)	BT50-HFD12-195-S80 (1 pc.)
Angle shaft (For tapping)	FR-T6 (1 pc.)	
Tap sleeve	TA6-3, 4, 5, 6, 8 (each 1 pc.)	
DETa-1 Collet	D12-4, 6, 8, 10, 12, 13 (each 1 pc.)	
Positioning pin	HP-50T (1 pc.)	HP-62T (1 pc.)
Spare bearing	7005ADB (1 set), 6805 (2 pcs.), 51106 (1 pc.)	